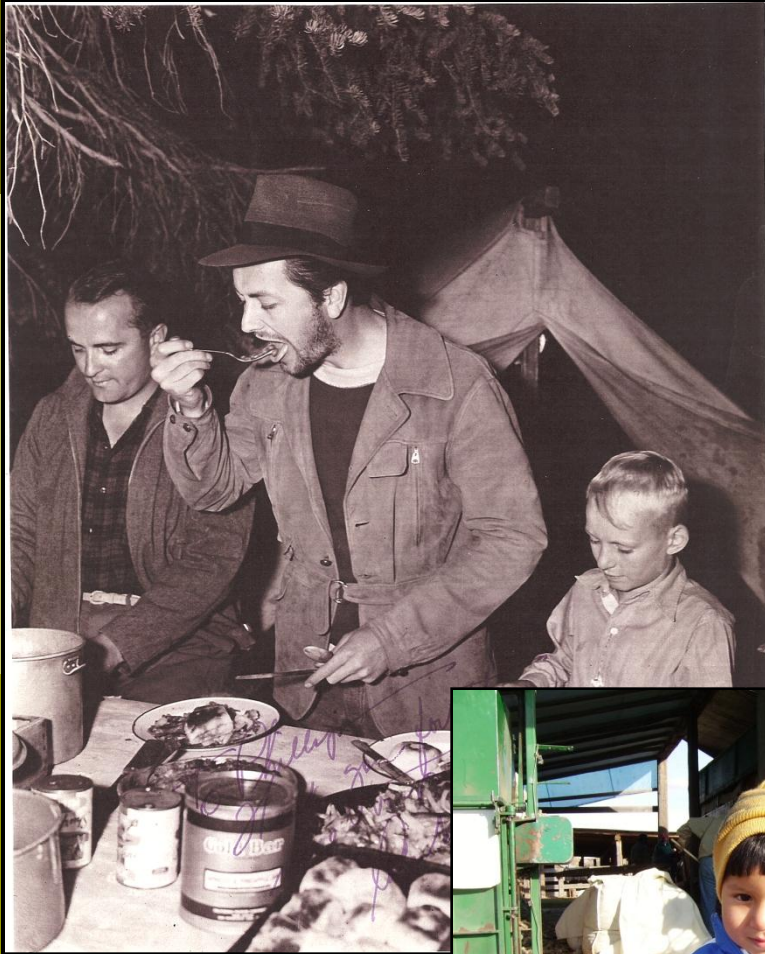
A photograph of a dry, hilly landscape with sparse vegetation and a herd of sheep grazing in the distance. The text is overlaid on the image.

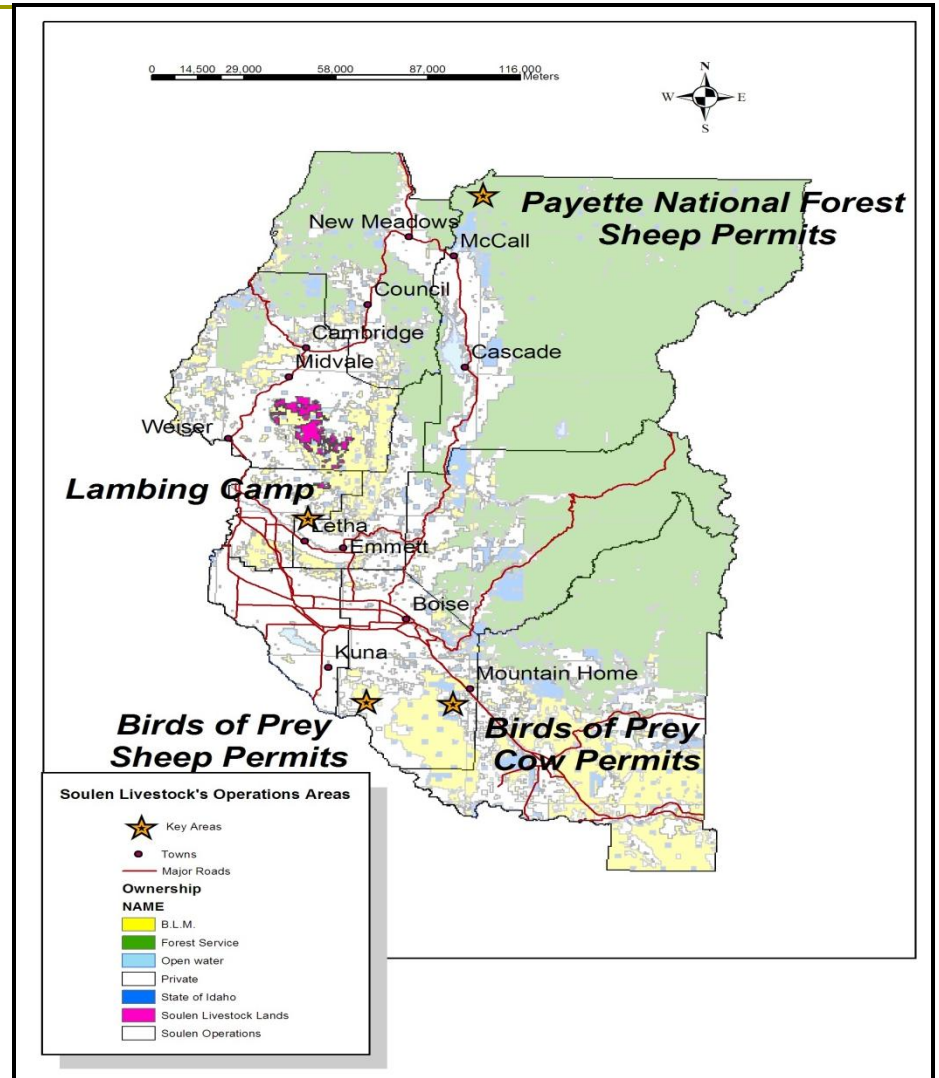
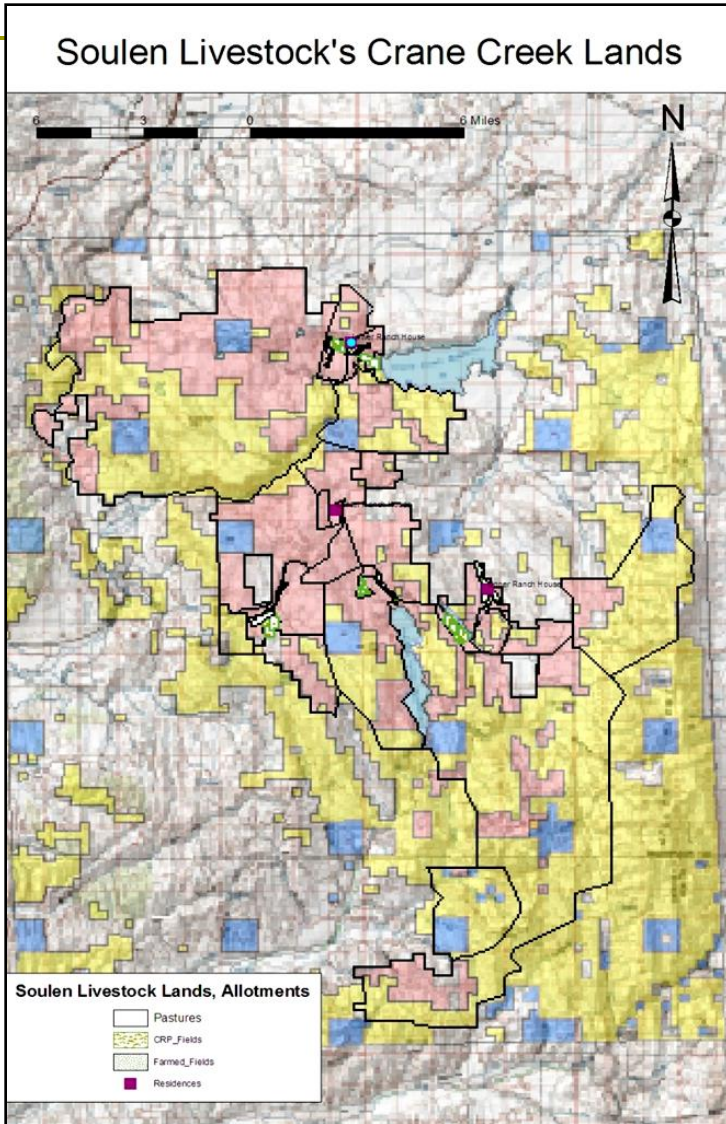
“There are two spiritual dangers in not owning a farm. One is the danger of supposing that breakfast comes from the grocery, and the other that heat comes from the furnace”

--Aldo Leopold

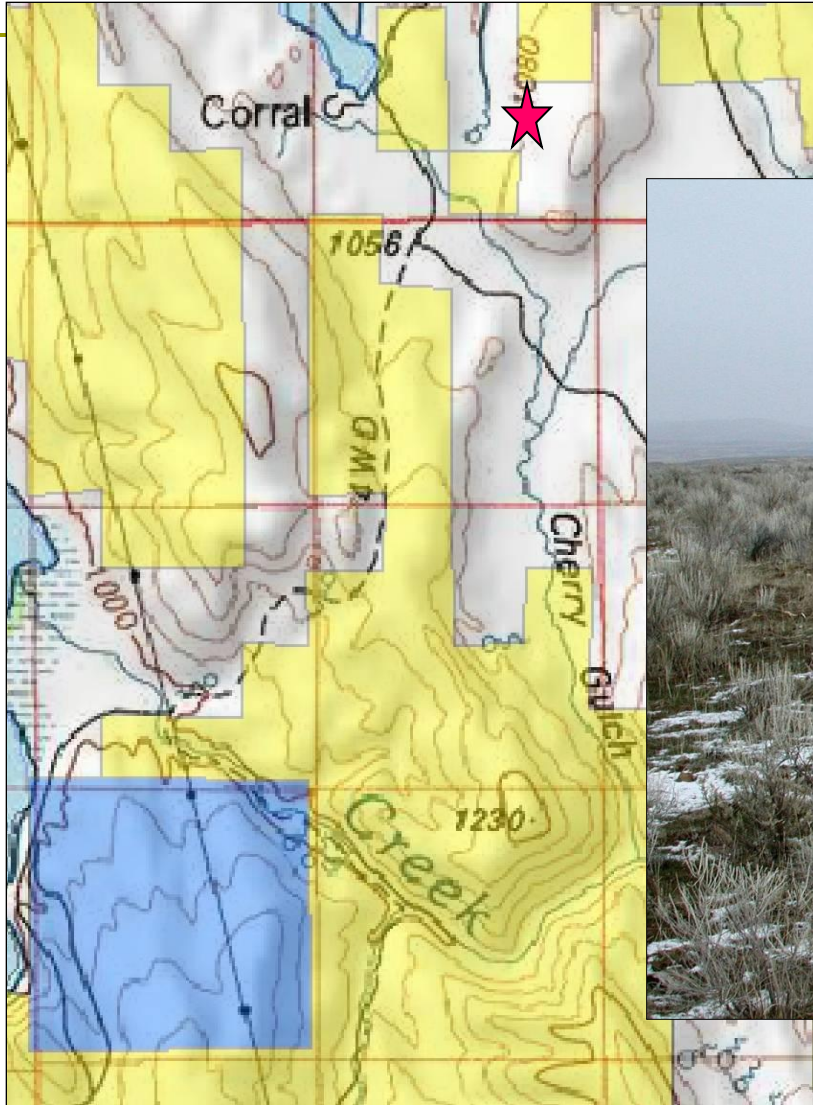
A Personal Story from Idaho



Complex Mix of Ownerships



Mixed Ownerships



Pressures & Stressors

- ❑ **Endangered Species**
- ❑ **Urban Sprawl**
- ❑ **Immigration**
- ❑ **Exchange Rates**
- ❑ **Forest Service Planning Regulations**
- ❑ **Predators**
- ❑ **Bighorn Disease Transmission**

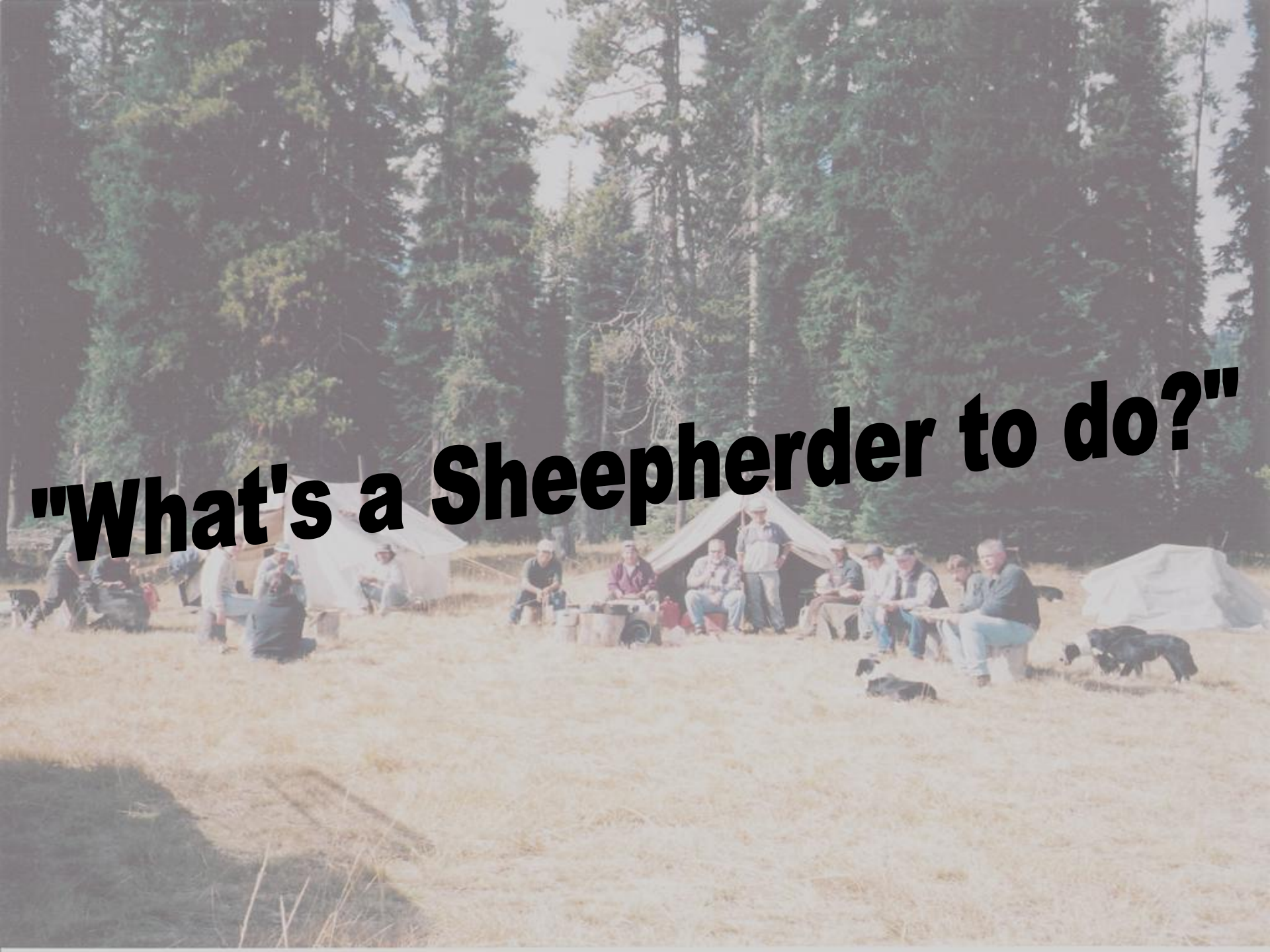
More Pressures.....

- ❑ **Increasing Land Values**
- ❑ **Invasive Species**
- ❑ **Competing uses of Public Lands**
- ❑ **Labor Availability**
- ❑ **Fire Cycles**
- ❑ **Availability of Credit**
- ❑ **Aging Producers**



The Consequences.

- ❑ **Fragmented Landscapes**
- ❑ **Rural Communities Struggle**
- ❑ **Loss of Jobs**
- ❑ **Cultural Dissension**



"What's a Sheepherder to do?"