

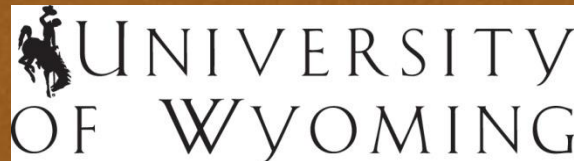
Food Security and Rangelands



John Tanaka

SRR Director

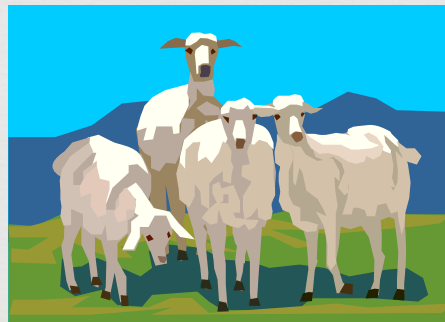
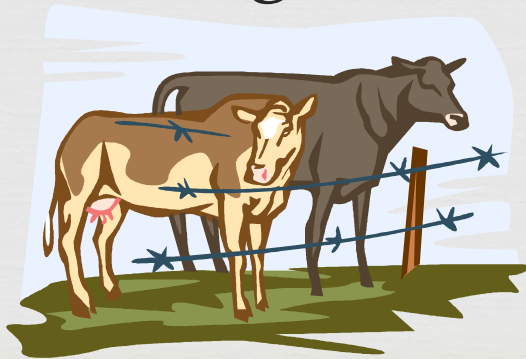
University of Wyoming Department of Renewable
Resources, Head



New Project



- How much food from rangelands?
- How much will production change over time due to different environmental stresses or policy changes?

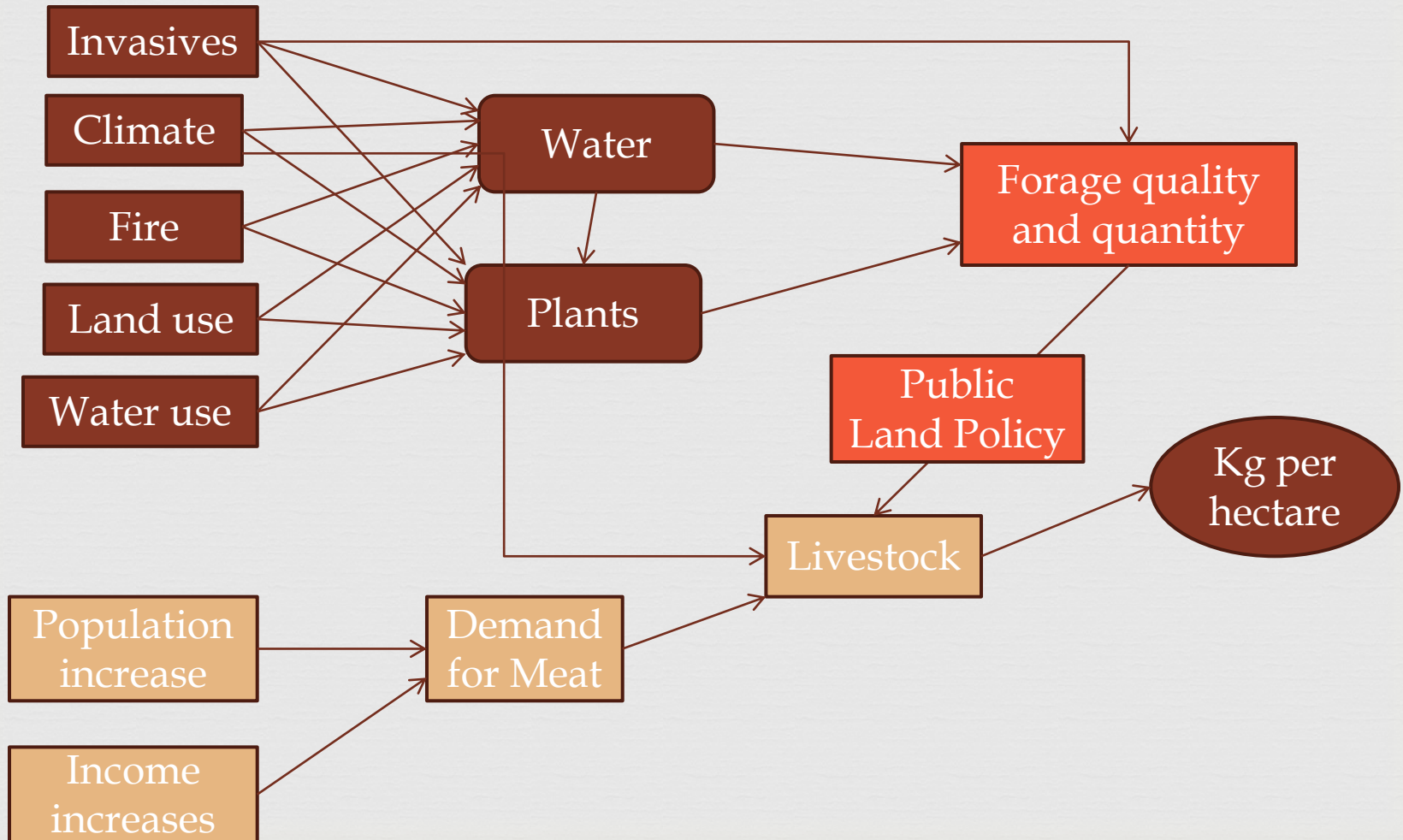


Preliminary Estimate



- ❧ Census of Agriculture information from NASS for Wyoming
- ❧ Lots of assumptions
 - ❧ Time spent on rangelands
 - ❧ Amount of rangeland
 - ❧ Grazing season

Model of Food Production



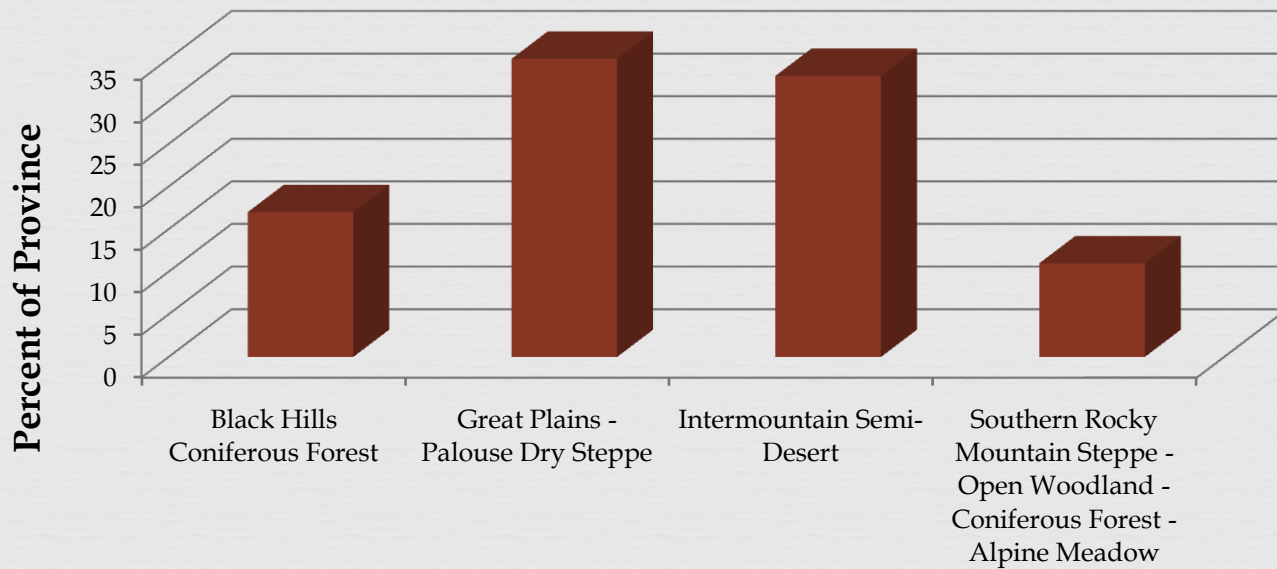
Ecological Provinces



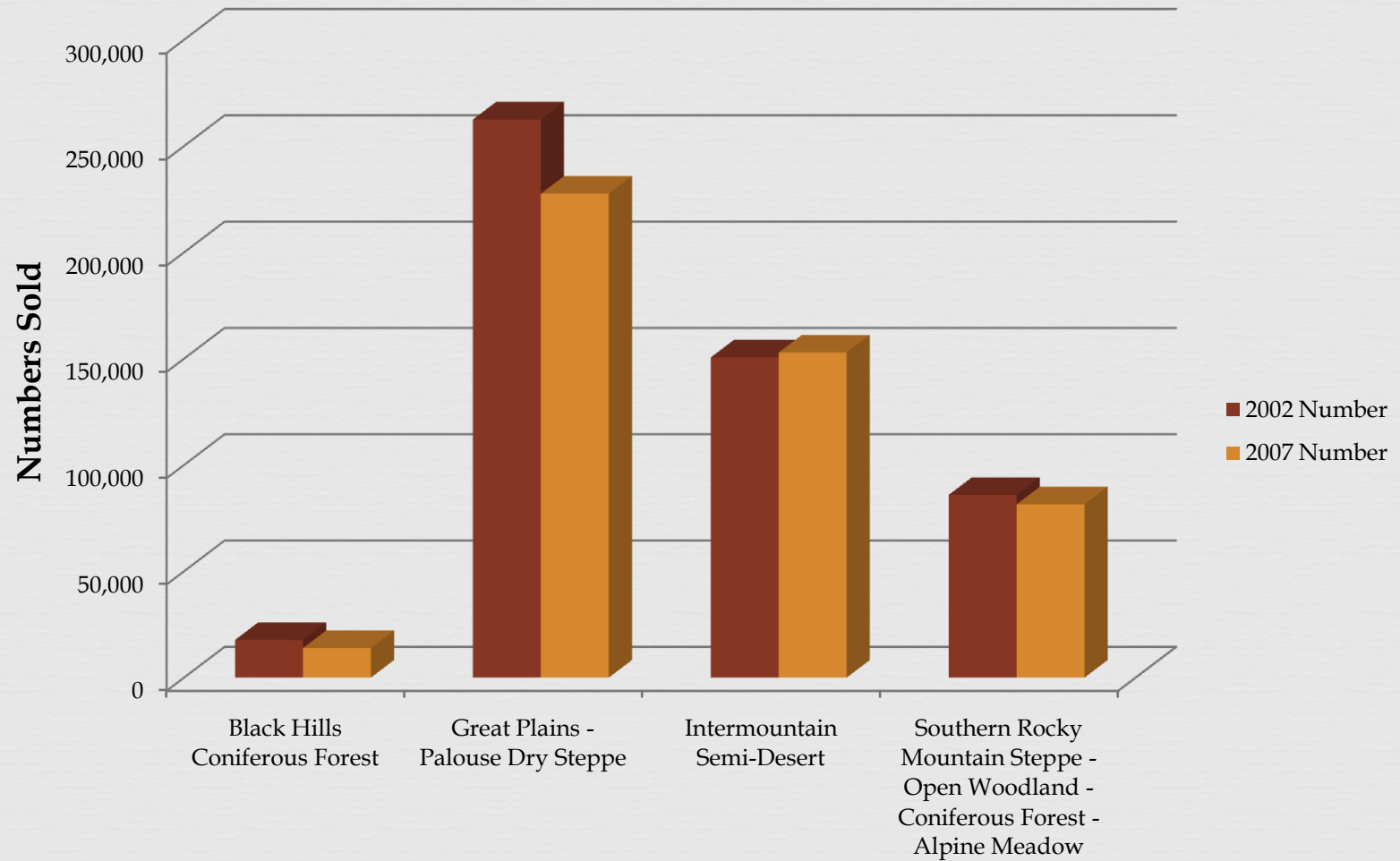
Time on Rangelands



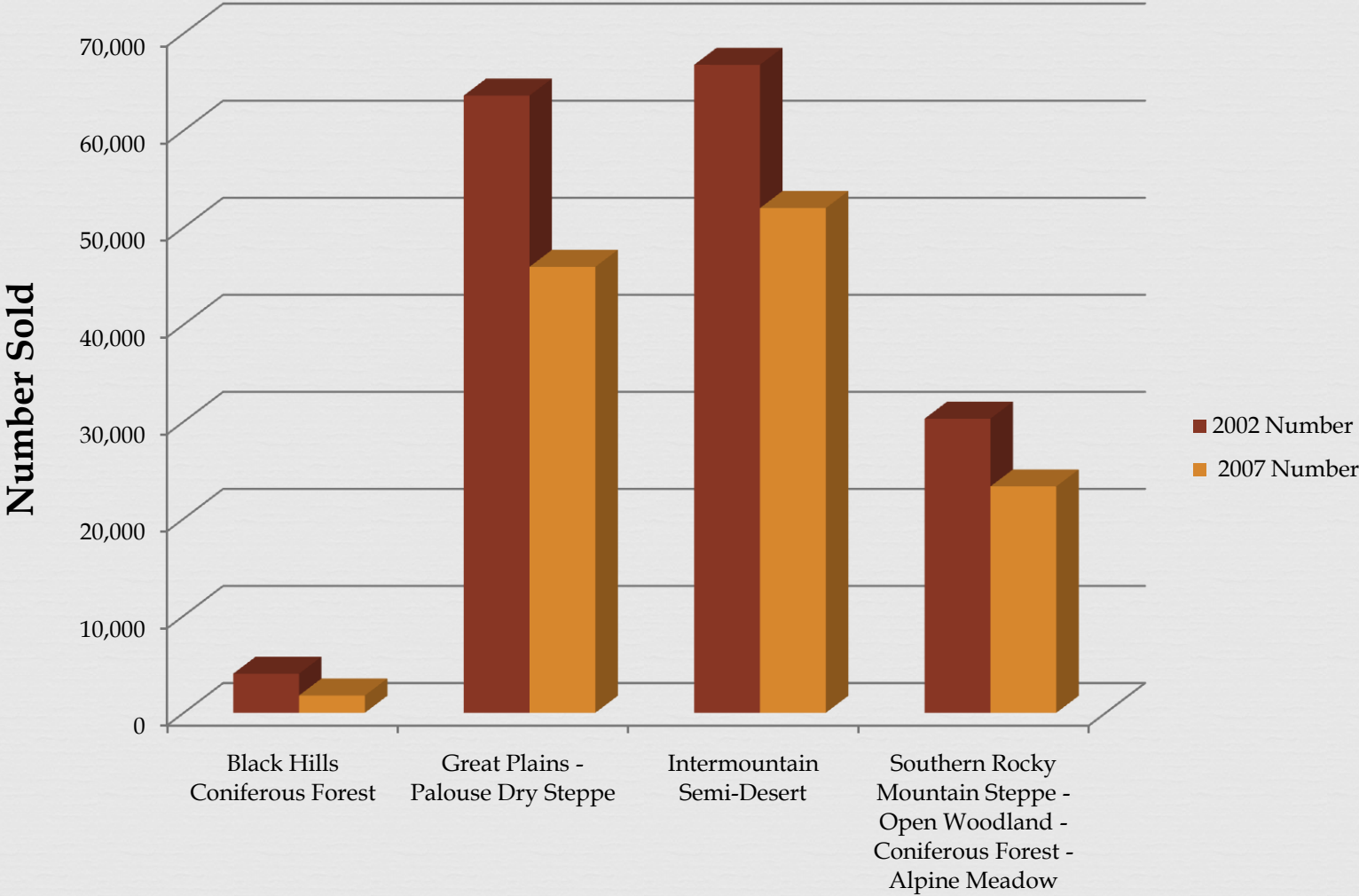
% from Rangelands



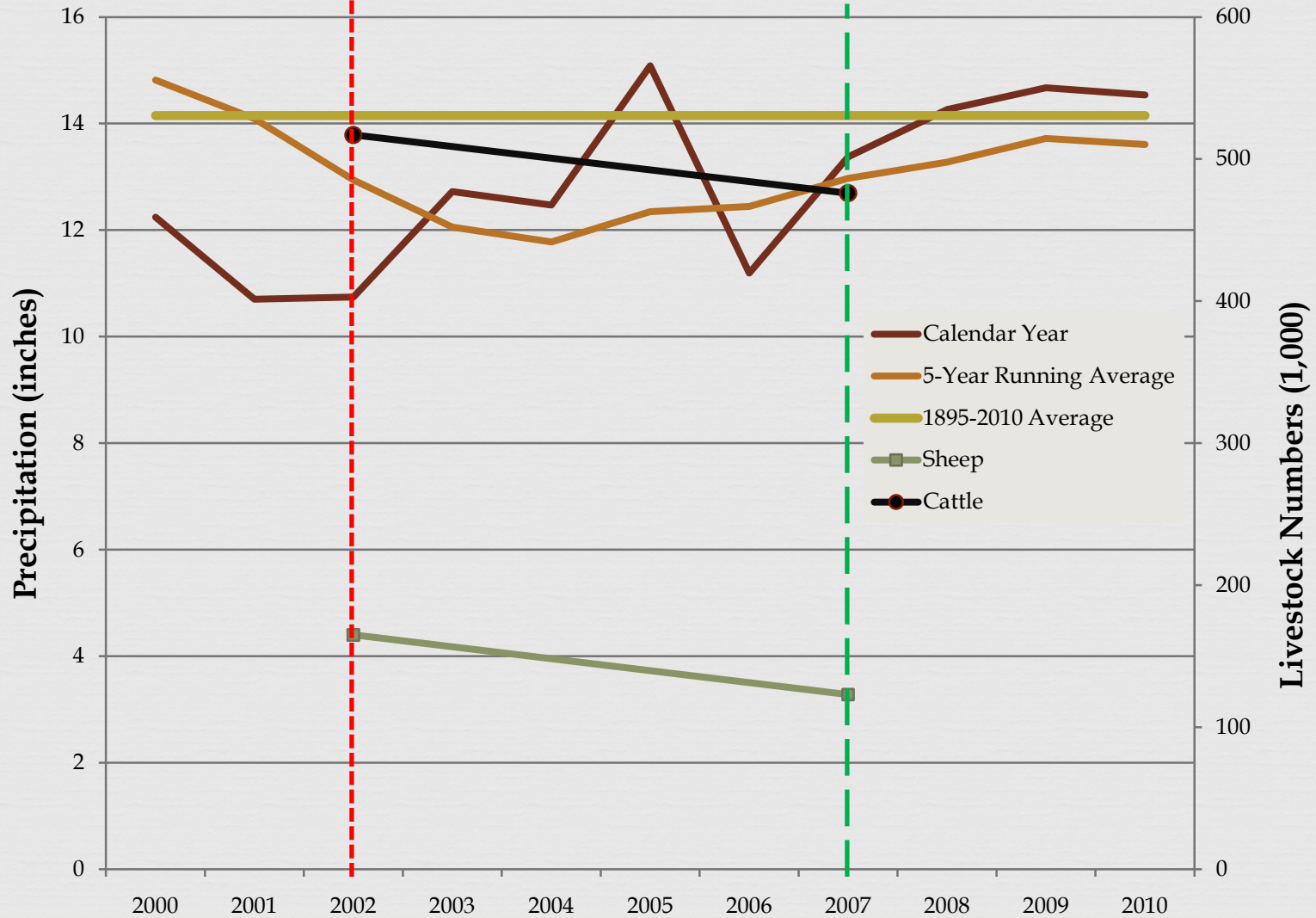
Wyoming Cattle and Calf Numbers Sold from Rangelands



Wyoming Sheep and Lamb Sales From Rangelands



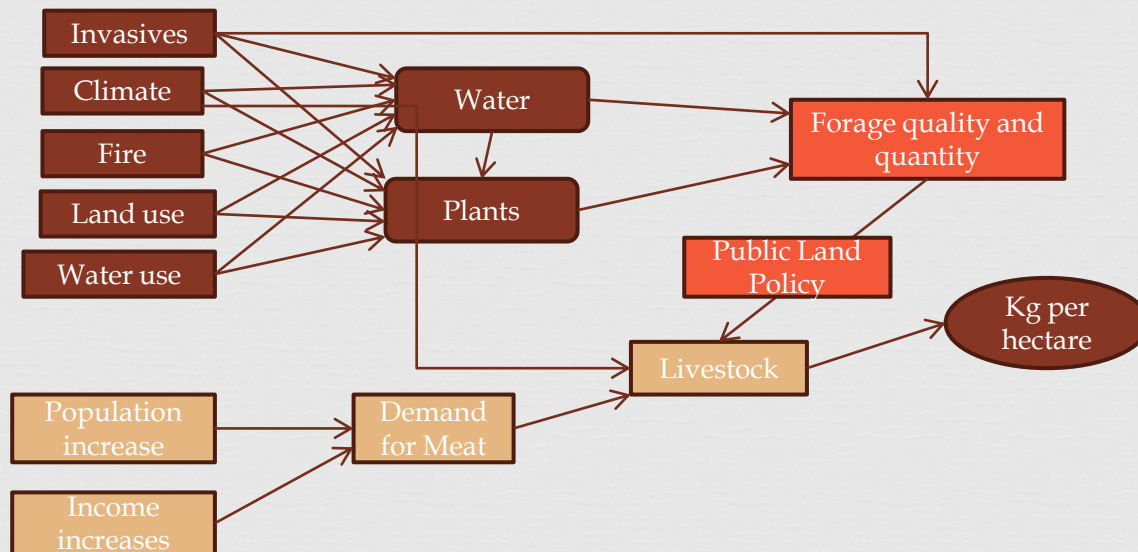
Wyoming Precipitation and Sheep and Cattle from Rangelands



Food Security



- Indicators can tell us about change over time
- Assessing the indicators can help understand causes
- Overlay environmental or policy changes



Questions



<http://sustainable.rangelands.org>

